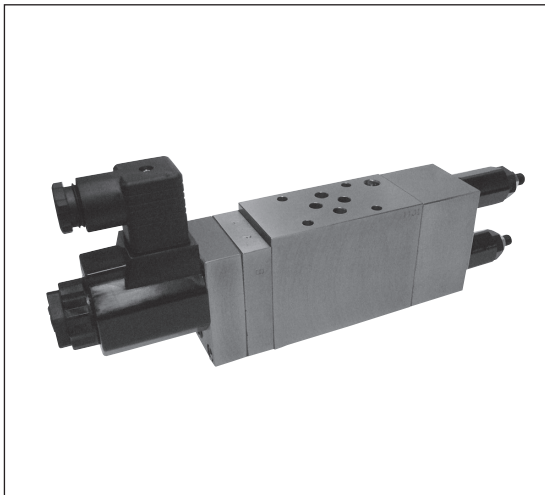


## TWO-STAGE PRESSURE REDUCING VALVE (HGD2H)



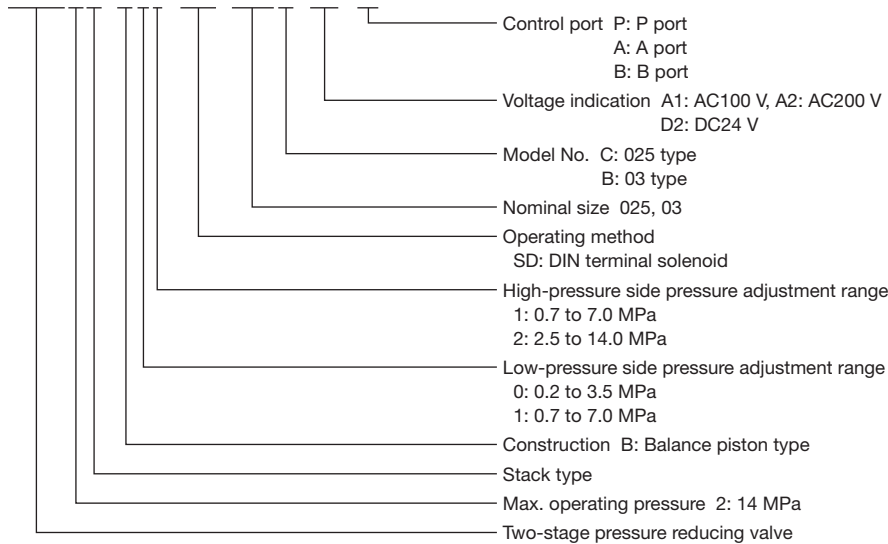
### ■ Features

Conventionally, pressure reducing control for two pressure levels required two pressure reducing valves (or one pressure reducing valve and one pilot-operated relief valve) and one solenoid valve. This type of valve allows pressure reducing control for two pressure levels by simply installing one valve under a directional control valve.

1. The valve is compact and can be installed in the space needed for mounting a single solenoid valve.
2. The balance piston type pressure reducing valve provides excellent pressure - flow characteristics.
3. The valve has two separate pressure adjusting parts allowing independent pressure adjustment of two pressure levels.

### ■ Description of the model designation

**HGD2H-B01-SD-025C-A1 (P)**



### ■ Specifications

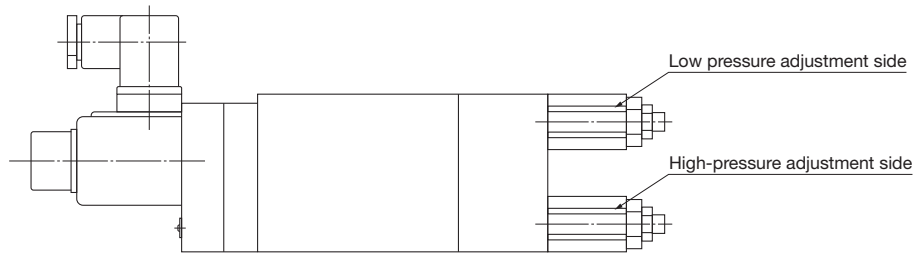
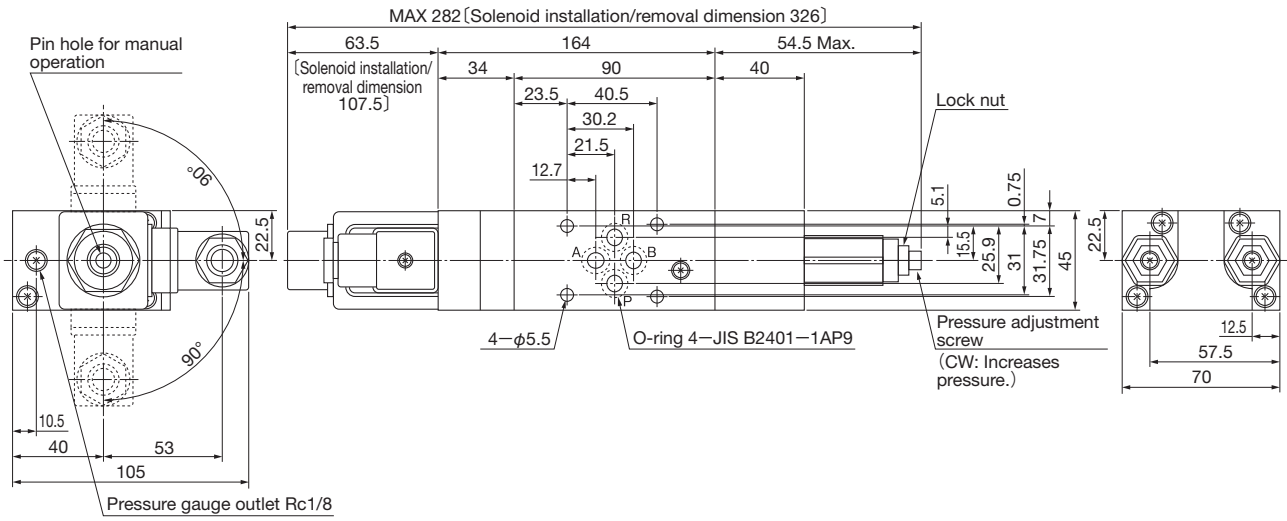
Control port	Model	Max. operating pressure (MPa)	Rated flow rate (L/min)	Maximum flow rate (L/min)	Symbol	Pressure adjustment range (MPa)	
						Low pressure side	High-pressure side
P	HGD2H-B**-SD-025C-**(P)	14	20	40		0:0.2 to 3.5 1:0.7 to 7.0	1:0.7 to 7.0 2:2.5 to 14.0
	HGD2H-B**-SD-03B-**(P)		40	80			
A	HGD2H-B**-SD-025C-**(A)		20	40			
	HGD2H-B**-SD-03B-**(A)		40	80			
B	HGD2H-B**-SD-025C-**(B)		20	40			
	HGD2H-B**-SD-03B-**(B)		40	80			

### ■ Solenoid characteristics

AC									DC		
Model	M01-AC100-D-TK	M01-AC200-D-TK	M01-AC110-D-TK	M01-AC220-D-TK	Model	M01-DC12-D-TK	M01-DC24-D-TK				
Rated Voltage (V)	AC100 50Hz	AC100 60Hz	AC200 50Hz	AC200 60Hz	Rated Voltage (V)	DC12	DC24				
Starting current (A)	2.66	2.35	1.33	1.18	Holding current (A)	2.35	1.22				
Holding current (A)	0.58	0.43	0.29	0.22	Power consumption (W)	28.2	29.3				
Power consumption (W)	25.0	20.8	25.0	20.8							

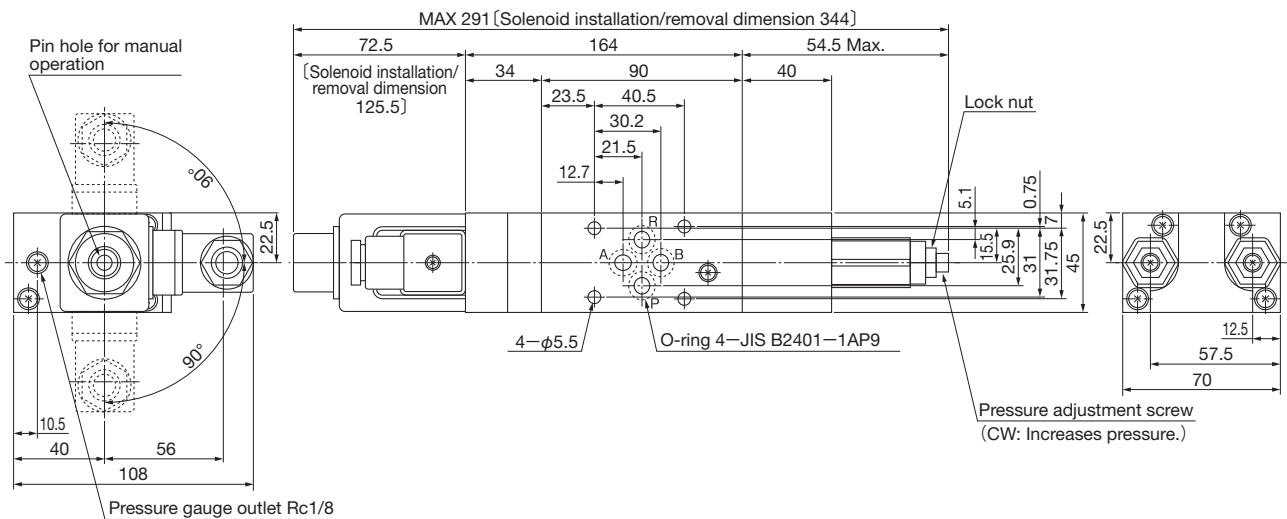
■ Outside dimensions

HGD2H-B\*\*-SD-025C-A\* (\*)



Mass: 4.1kg

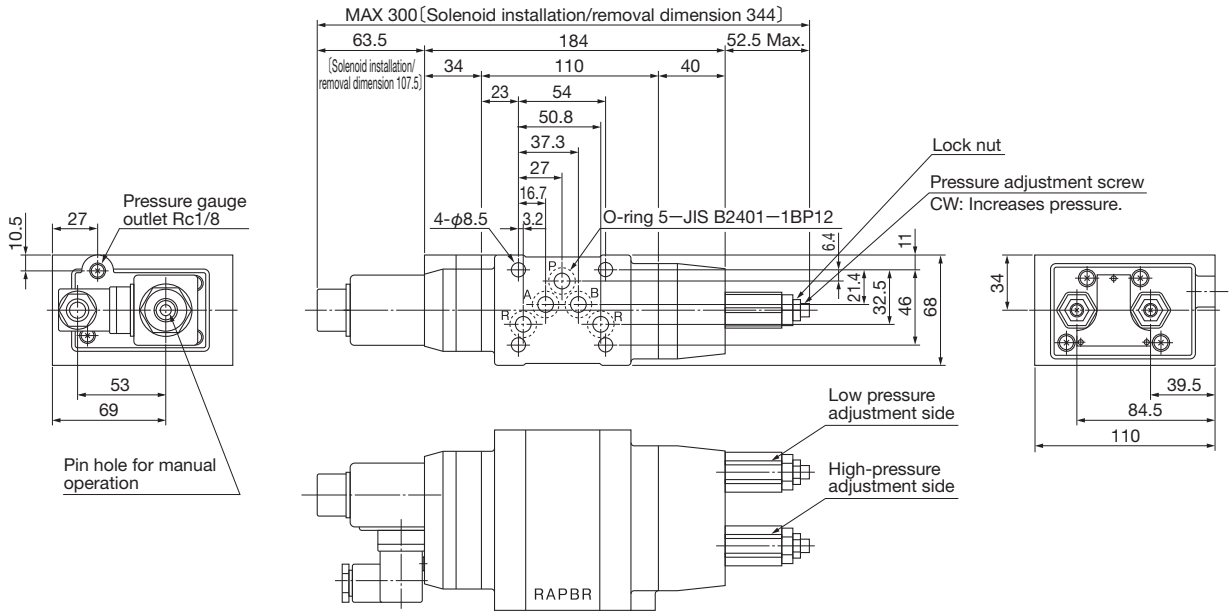
HGD2H-B\*\*-SD-025C-D\* (\*)



Mass: 4.3kg

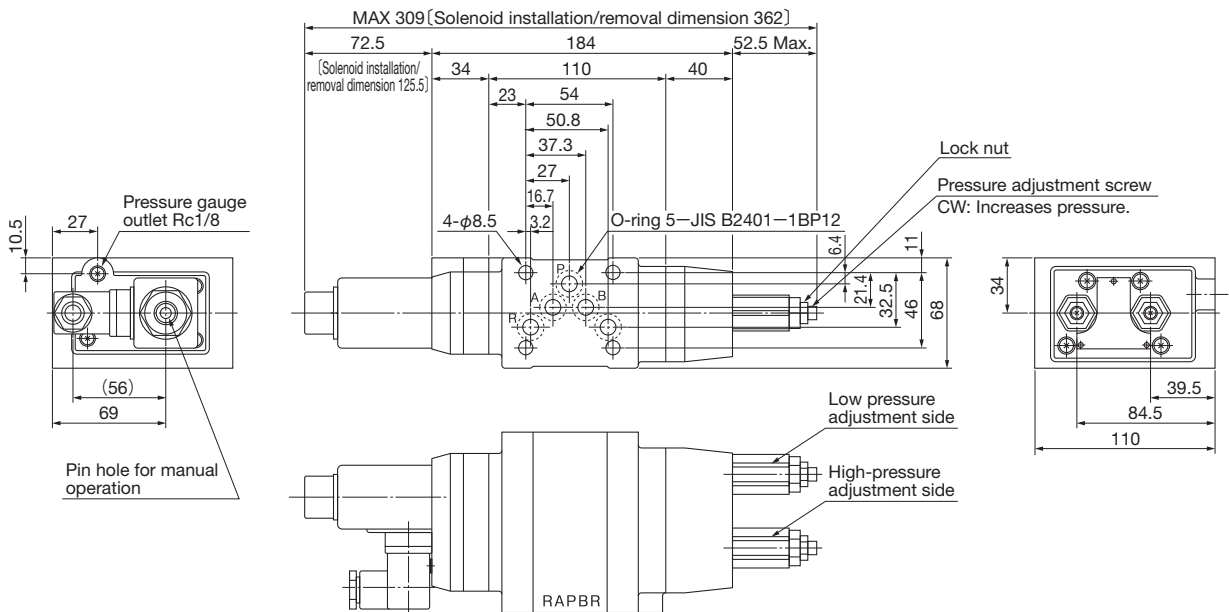
Outside dimensions

HGD2H-B\*\*-SD-03B-A\* (\*)



Mass: 8.4kg

HGD2H-B\*\*-SD-03B-D\* (\*)



Mass: 8.6kg